

SIGNAGE REQUIREMENTS - PEDAL PLAY MOBILE BIKE RODEO

STATION 1 W. Erskine Johnston Public School:

Check-in/Check-out
Bike Check
Helmet Check
Hand Signals
Mini Main Street
Figure 8
Meeting Place

HTA regs:

HTA 104 - Helmet:

- Every cyclist must wear an approved helmet;
- Fines only issued for persons under the age of 18;
- Parents or guardians shall not knowingly permit cyclists under sixteen to ride without a helmet;
- Set fine: \$60.00.

HTA s62(17) - Lights:

- Section 62 of the Act requires cyclists to have proper lights, and reflectors on their bicycles and mopeds. When on a roadway from 1/2 hr before sunset to 1/2 hr after sunrise, and at any other time with insufficient light or unfavourable conditions, every bicycle shall have a white light on the front and a red light or reflector on the rear.
- Set fine: \$110

HTA 75 (5) - Bell:

- A bike must have a bell or horn in good working order.
- Set fine: \$85.00.

HTA 64(3) - Brakes:

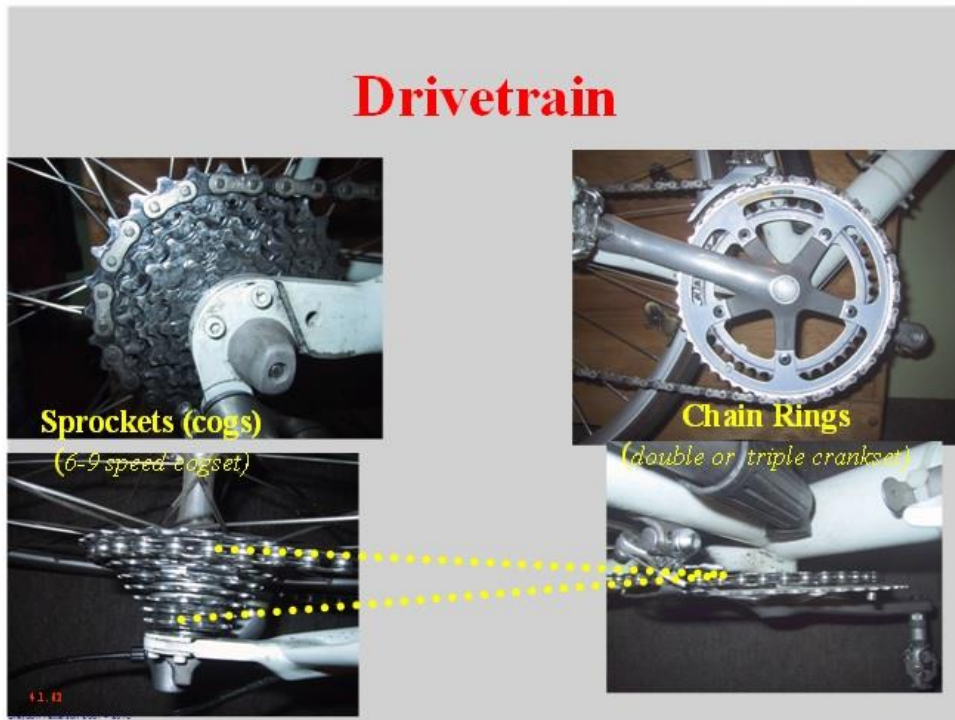
- A bike must have at least one brake system on the rear wheel. When you apply the brakes, you should be able to skid on dry, level pavement.
- Set fine: \$85.00.

STATION 2 - Beaver Pond A:

Environment

STATION 3 - Beaver Pond B:

Drive Train pic below



STATION 4 - St-Remi School:

Truck Blind Spots

Poster of Truck Blind Spots - see below

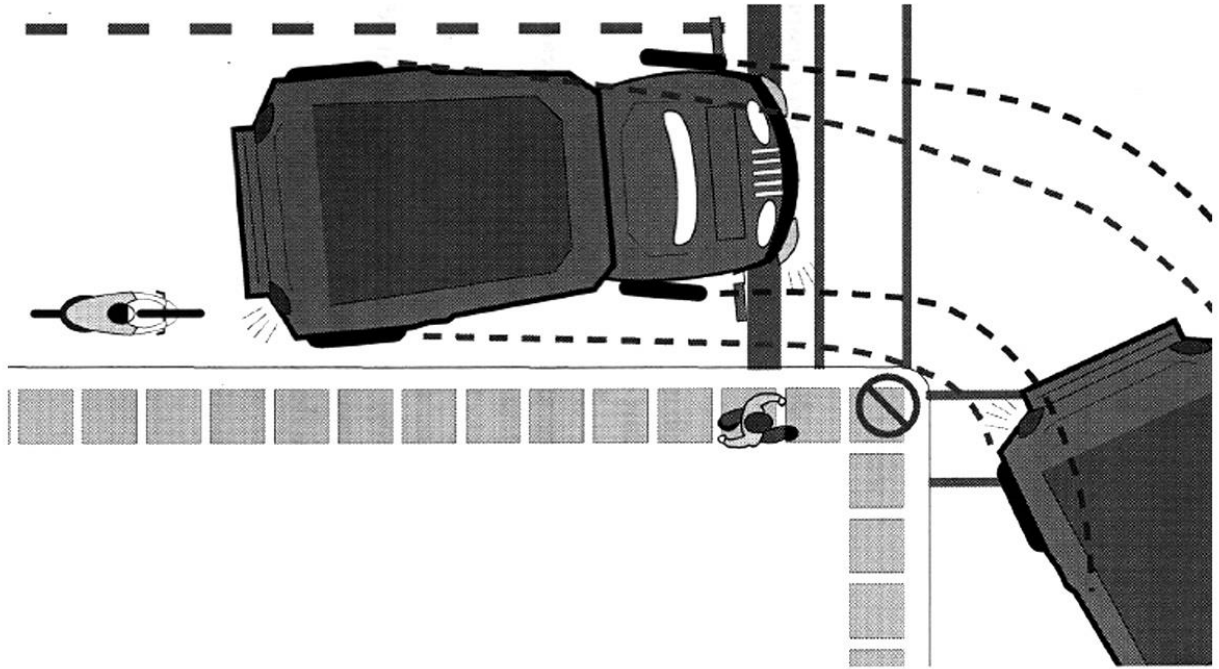
HTA Laws

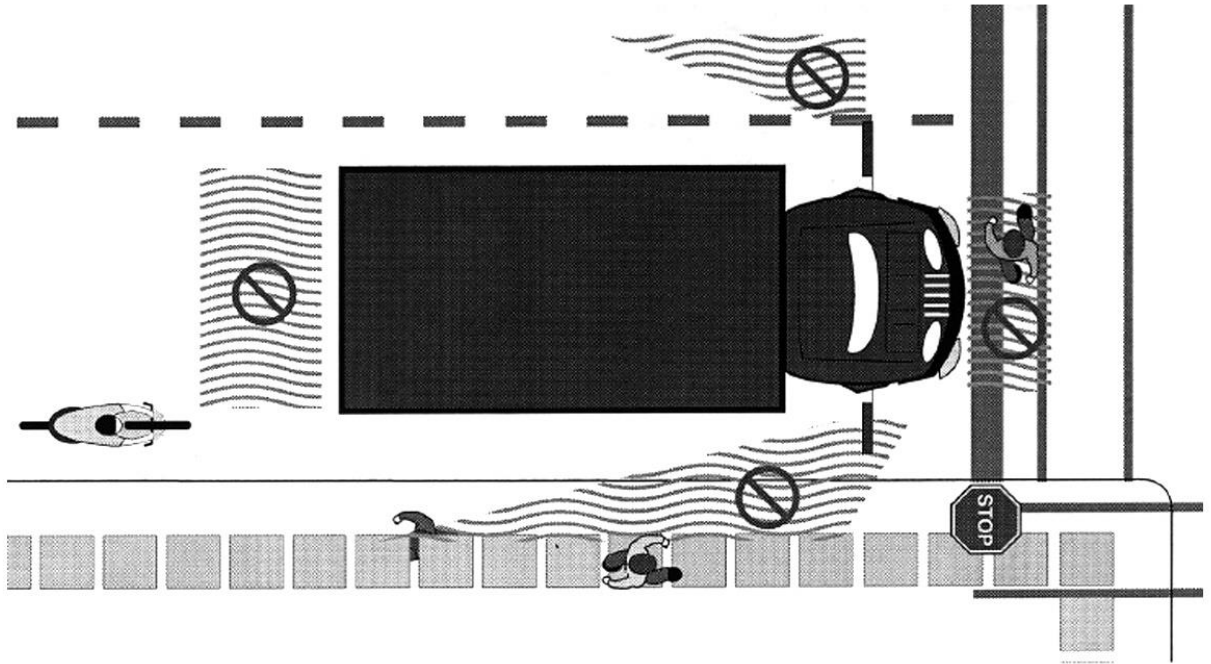
HTA Bill 31 - "Dooring":

- "Dooring", commonly refers to someone opening a parked motor vehicle door into the path of a cyclist or other traffic;
- Set fine: \$365 PLUS three (3) demerit points;
- Drivers who choose to contest the charge, could be subject to a fine up to \$1,000 PLUS three demerit points, upon conviction.

HTA Bill 31 - "One-metre" Rule:

- Drivers must keep a one-metre (3 feet) distance from cyclist when passing;
- Set fine:\$110.





STATION 5 - All Saints High School:

- Roundabouts
- Crosswalk
- Speed Bumps